

**2 Bed  
Apartment  
located in**



67D Pembroke Road  
London  
E17 9BB



£1,800 Per Month

**\*\*Video tour available at request\*\***

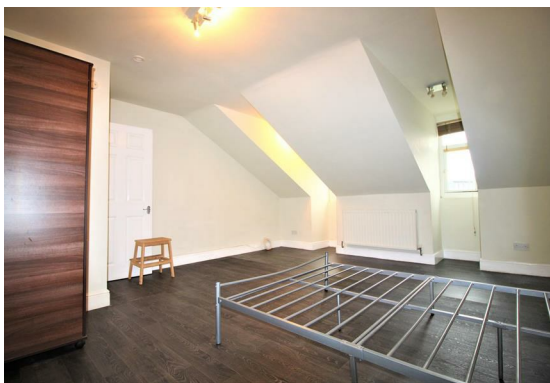
Sincere Lettings are delighted to present this spacious two bedroom split level flat, which is a wonderful addition to the E17 rental market and is located on Pembroke Road.

- Two double bedrooms
- Large reception room
- Family Bathroom
- Split Level flat
- Storage space
- Parking

Less than 12-minute walk to Walthamstow Central Station (0.4 Miles)

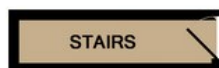
The flat is in a great location, close to nearby bus and train stations, allowing for simple commuting. The property is ideal for prospective tenants because it is surrounded by a variety of local shops, supermarkets, and cafes, allowing them to get all of their daily necessities right on their doorstep.



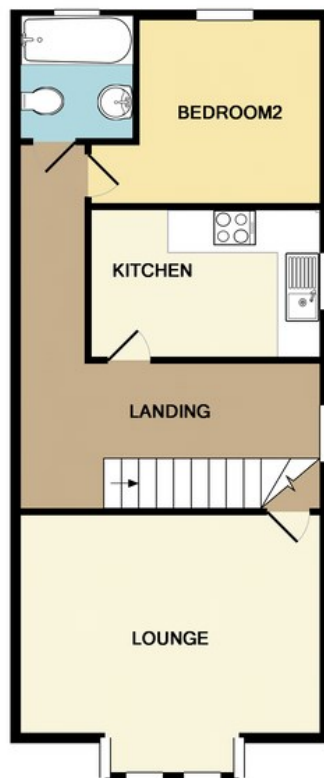




67D Pembroke Road, London, E17 9BB



GROUND FLOOR  
APPROX. FLOOR  
AREA 24 SQ.FT.  
(2.2 SQ.M.)



2ND FLOOR  
APPROX. FLOOR  
AREA 245 SQ.FT.  
(22.7 SQ.M.)

1ST FLOOR  
APPROX. FLOOR  
AREA 496 SQ.FT.  
(46.1 SQ.M.)

TOTAL APPROX. FLOOR AREA 765 SQ.FT. (71.0 SQ.M.)

Whilst every attempt has been made to ensure the accuracy of the floor plan contained here, measurements of doors, windows, rooms and any other items are approximate and no responsibility is taken for any error, omission, or mis-statement. This plan is for illustrative purposes only and should be used as such by any prospective purchaser. The services, systems and appliances shown have not been tested and no guarantee as to their operability or efficiency can be given

Made with Metropix ©2012

Energy Efficiency Rating		
	Current	Potential
Very energy efficient - lower running costs		
(92 plus) <b>A</b>		
(81-91) <b>B</b>		
(69-80) <b>C</b>		
(55-68) <b>D</b>		
(39-54) <b>E</b>		
(21-38) <b>F</b>		
(1-20) <b>G</b>		
Not energy efficient - higher running costs		
<b>England &amp; Wales</b>	EU Directive 2002/91/EC	

## DIRECTIONS

## CONTACT

252 Hoe Street  
London  
E17 3AX

E: [admin@sincerelettings.co.uk](mailto:admin@sincerelettings.co.uk)

T: 02085200425

[www.sincerelettings.co.uk](http://www.sincerelettings.co.uk)

